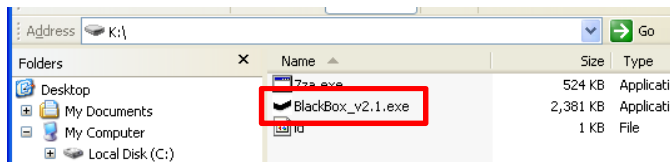


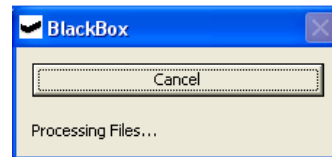
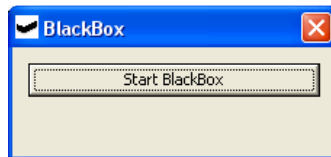


User Instructions

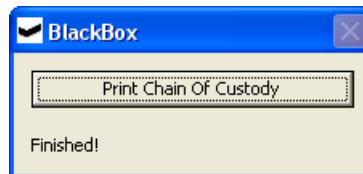
1. Plug the external BlackBox device into an available USB port.
2. Run the BlackBox program, **BlackBox_v2.1.exe** by double-clicking on it.



3. You will see the screen below.
4. Press **Start BlackBox** to begin. As the process runs, you will see the screens below.



5. After the collection is complete you will see the screen below. Click **Print Chain Of Custody**.



6. Print the Chain of Custody. Your browser will open to show the Chain of Custody for your process, similar to below:

- e. Send the signed Chain of Custody form along with the BlackBox device back to your eDiscovery provider.

| Chain Of Custody Document | | Reference No. |
|---|--|--|
| Hard Drive Model No. WDC WD1001FALS-00J7B0 | Hard Drive Serial No. WD-WMATV0081752 | Volume Serial No. cc456686 |
| Print Name | Signature | Date 11/22/2012 21:58:58 UTC |
| Drive0 MD5 Hash | | Physical Address |
| Date/Time | Released By: Signature/Tracking No. | Received By: Signature/Tracking No. |
| | | Reason For Change: |

- d. Print and sign your name on the Chain of Custody form. Enter the address where the collection took place.

- e. Send the signed Chain of Custody form along with the BlackBox device back to your eDiscovery provider.